

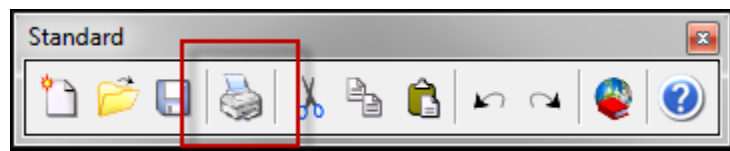
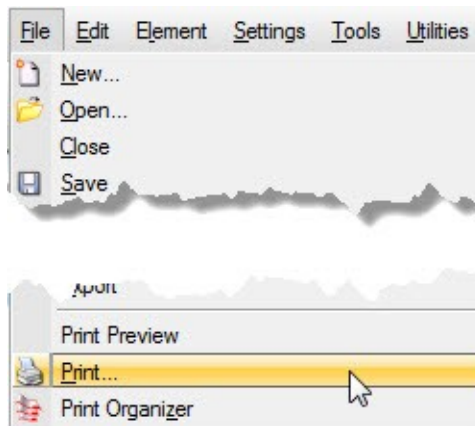
MICROSTATION PRINT

Description

All printing functions can be performed from the Print dialog. Using the options in this dialog you can select a printer and adjust various settings that affect printing. Additionally, you can preview the printed output.

Instructions

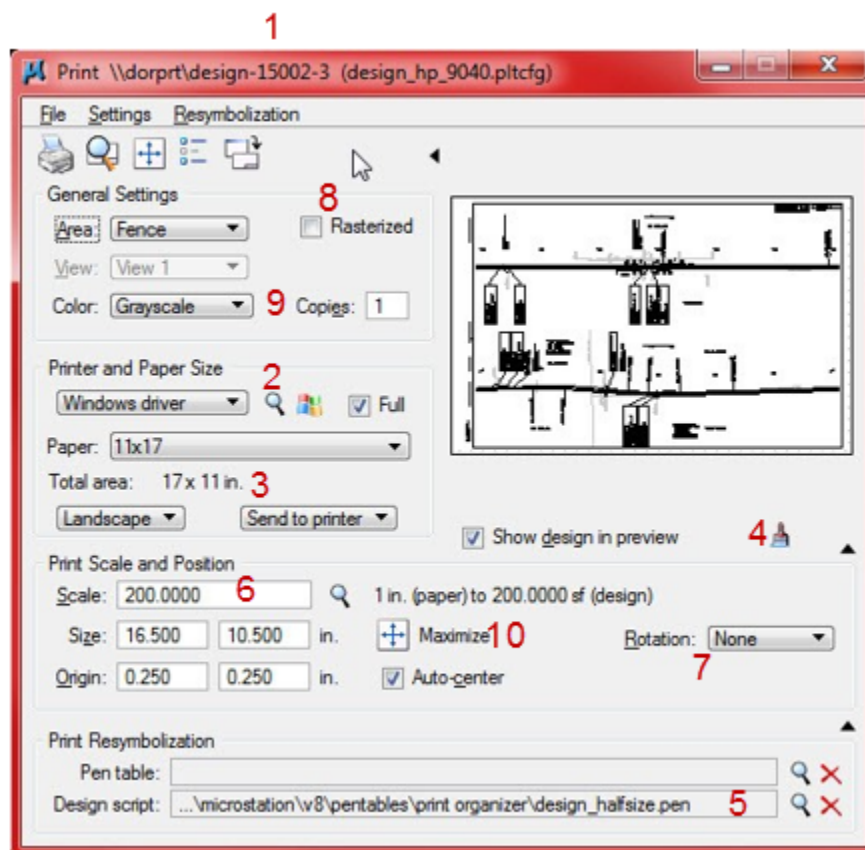
In a MicroStation **file**, click on File and then click **Print**.



MICROSTATION PRINT

The MicroStation Print dialog will open.

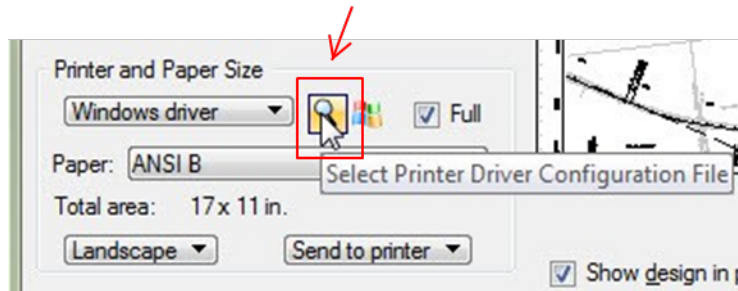
1. Plot queue and plot configuration file being used (Top of dialog box)
2. Select new plot configuration file (See page 3)
3. Paper size. More sizes may be available
4. Dialog expansion arrows
5. Design Script File
6. Scale. Key-in the scale
7. Rotation
8. Rasterized ... for printing transparent elements
9. Color
10. Maximize



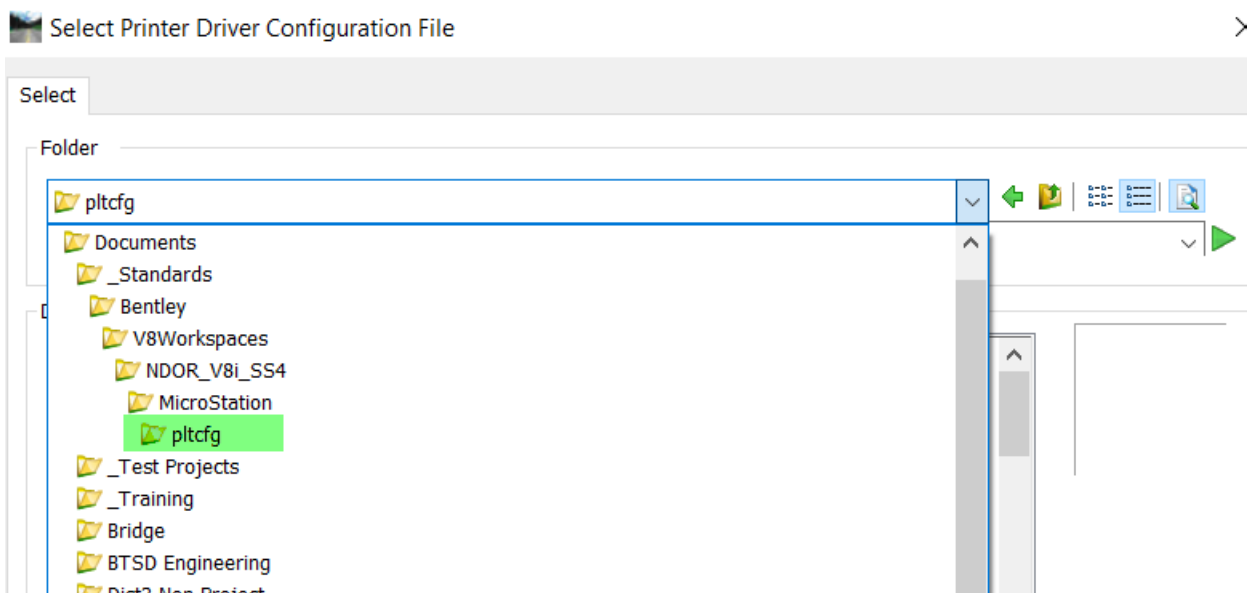
To change printers click on the (2) magnifying glass and select a different plot config file.

MICROSTATION PRINT

To change printers click on Select Printer Driver Configuration file.

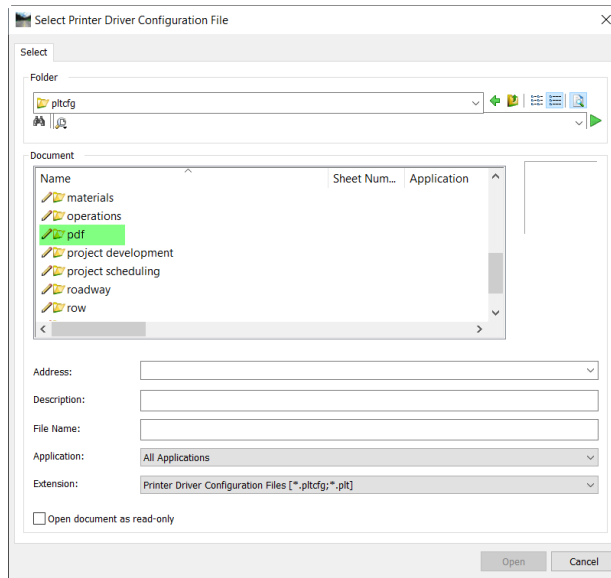


The plot config files that are available to the user will be displayed. Pull the folder selection down and click on the pltcfg folder.

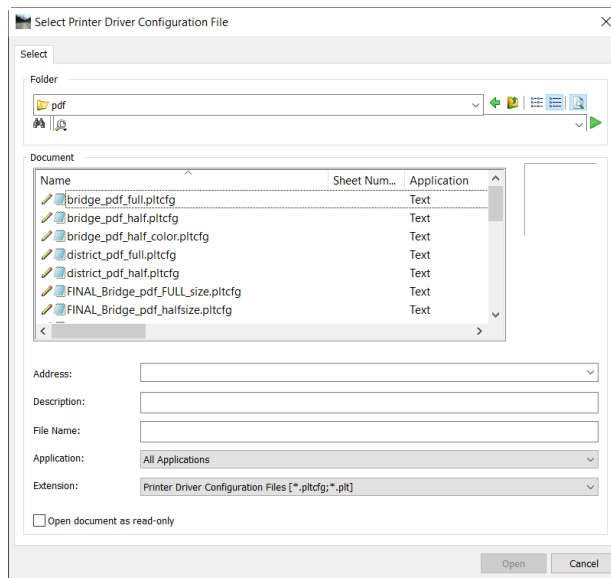


MICROSTATION PRINT

Double click the pdf folder.

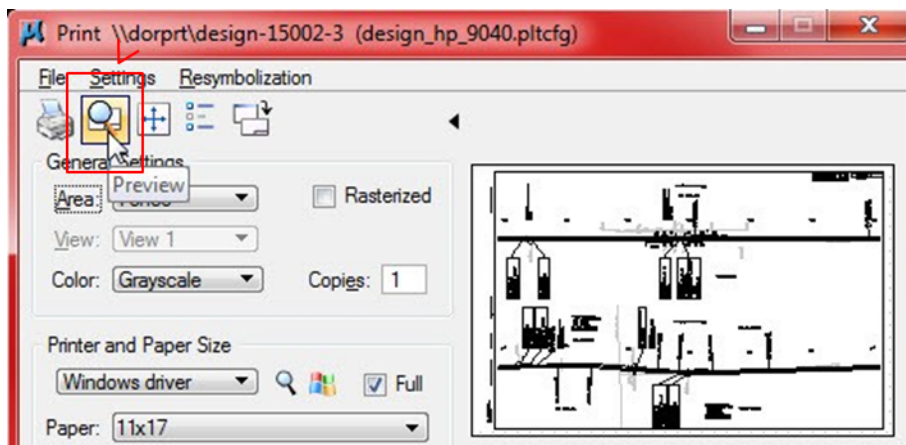


Select the desired pltcfg file.



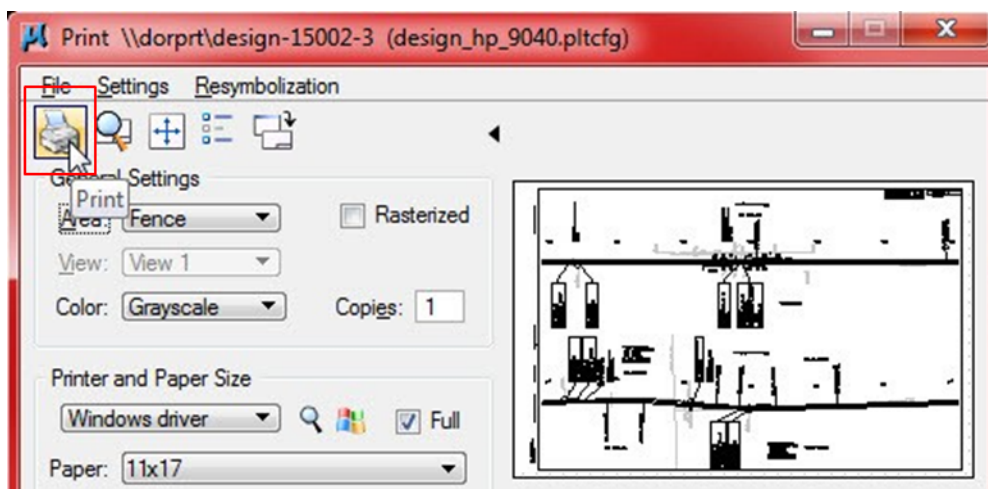
MICROSTATION PRINT

Click the Preview button to see a preview of the plot selection.



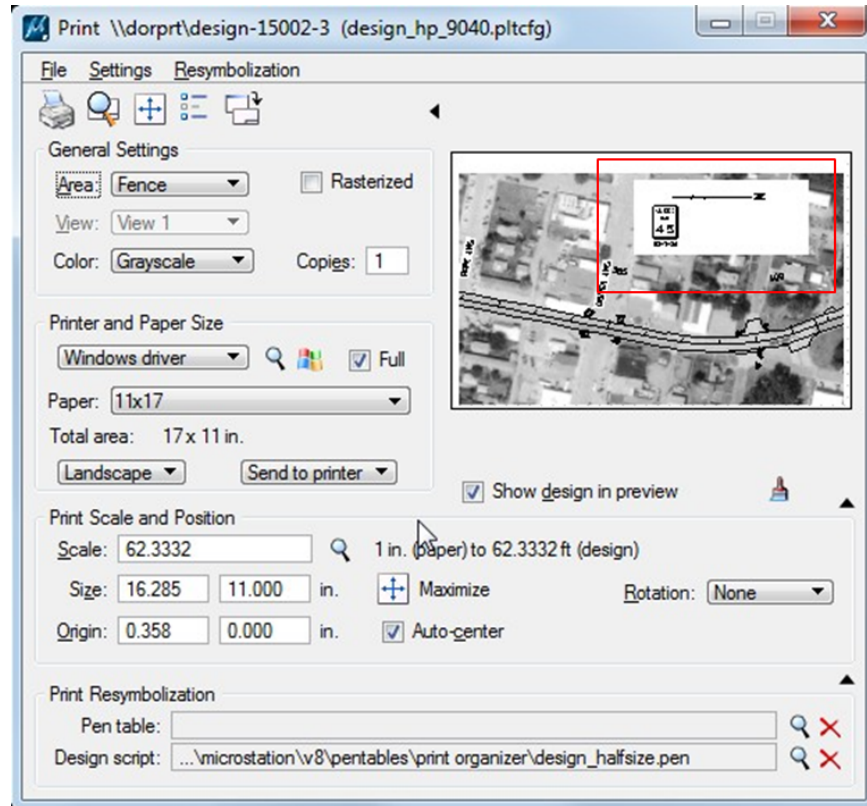
Users can expand the print preview dialog box by clicking, holding and dragging the corners of the preview dialog box.

Click **Print** to Print.



MICROSTATION PRINT

To print an Aerial Sheet with a shape masking the photo.



Draw an opaque shape on level 171 (Notes North Arrow). Remember to set the element priority of the shape so that it is behind the other elements. The shape can be any color and it will plot white.

