

# The Nebraska State Highway Commission

District 2 Program Meeting

NEBRASKA


Good Life. Great Journey.

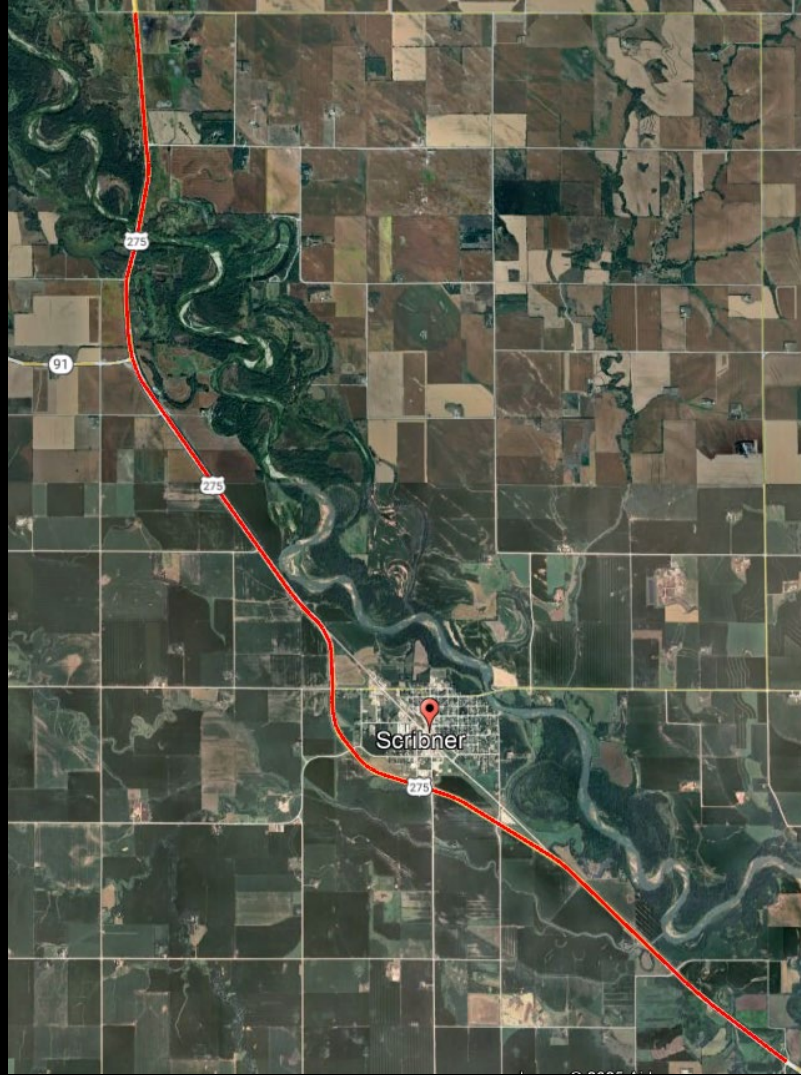
---

DEPARTMENT OF TRANSPORTATION



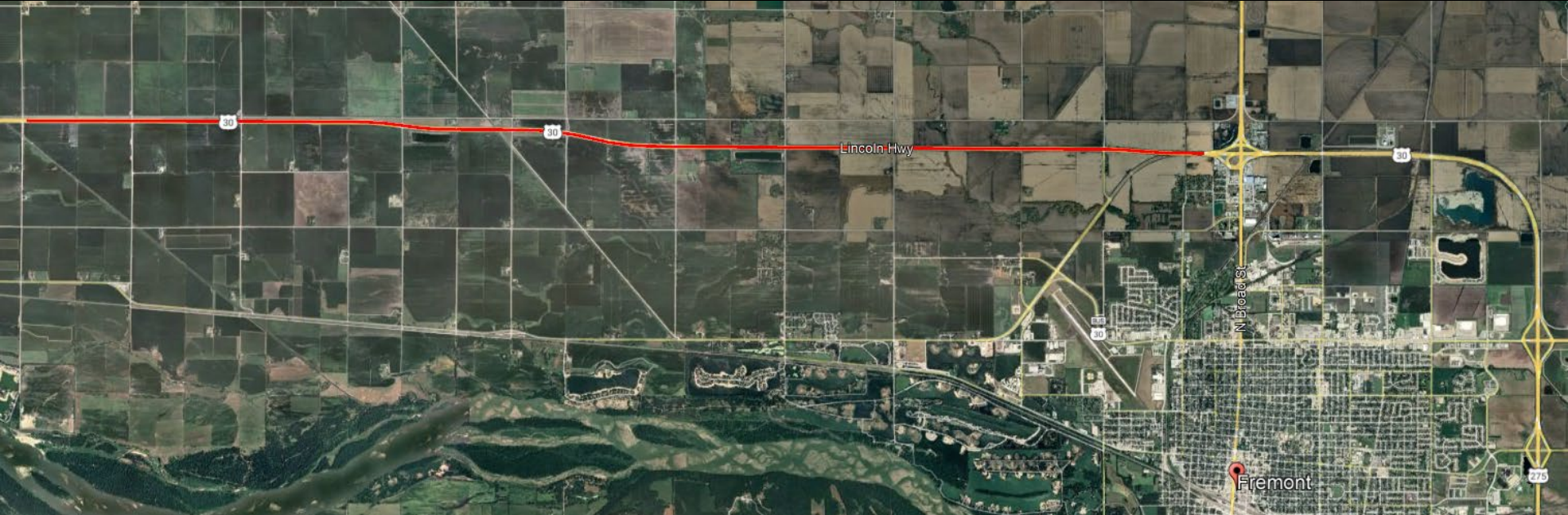
# Outline

- **Recent Accomplishments**
  - **RCUTs and other Safety Improvements**
  - **This Year's Program**
  - **Metro Area Travel Improvement Study (MTIS) Projects**
- 









Lincoln Hwy

Fremont

30

30

30

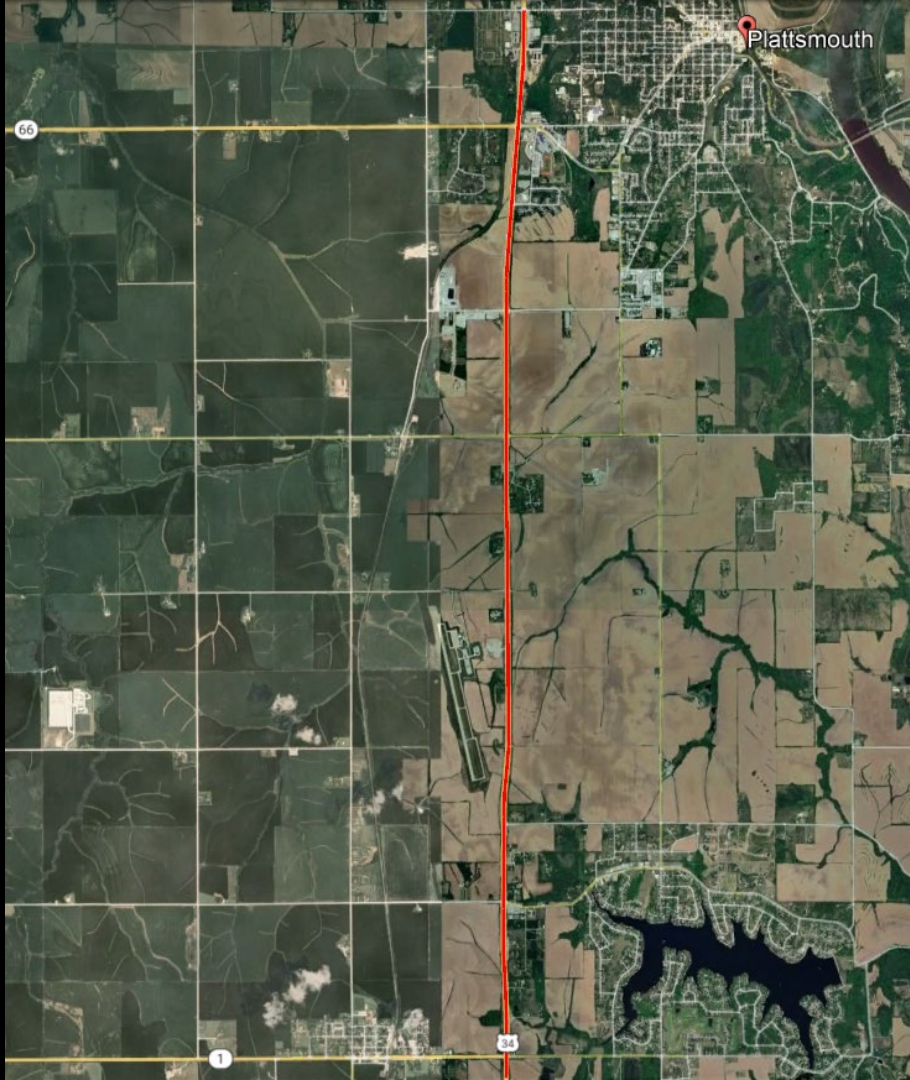
N Broad St

30

275









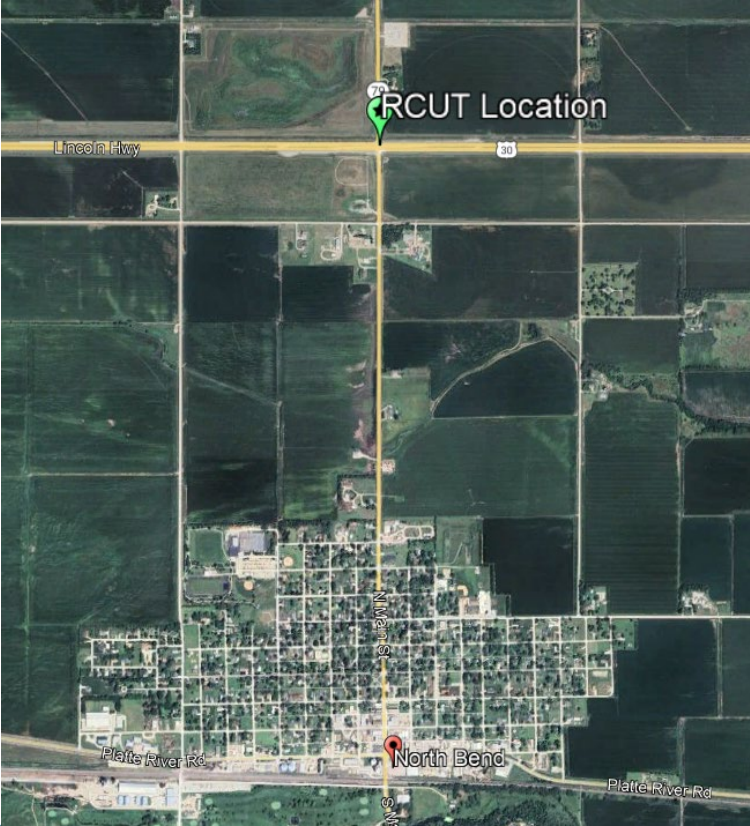


# RCUT Installations



# RCUT Installations

## North Bend

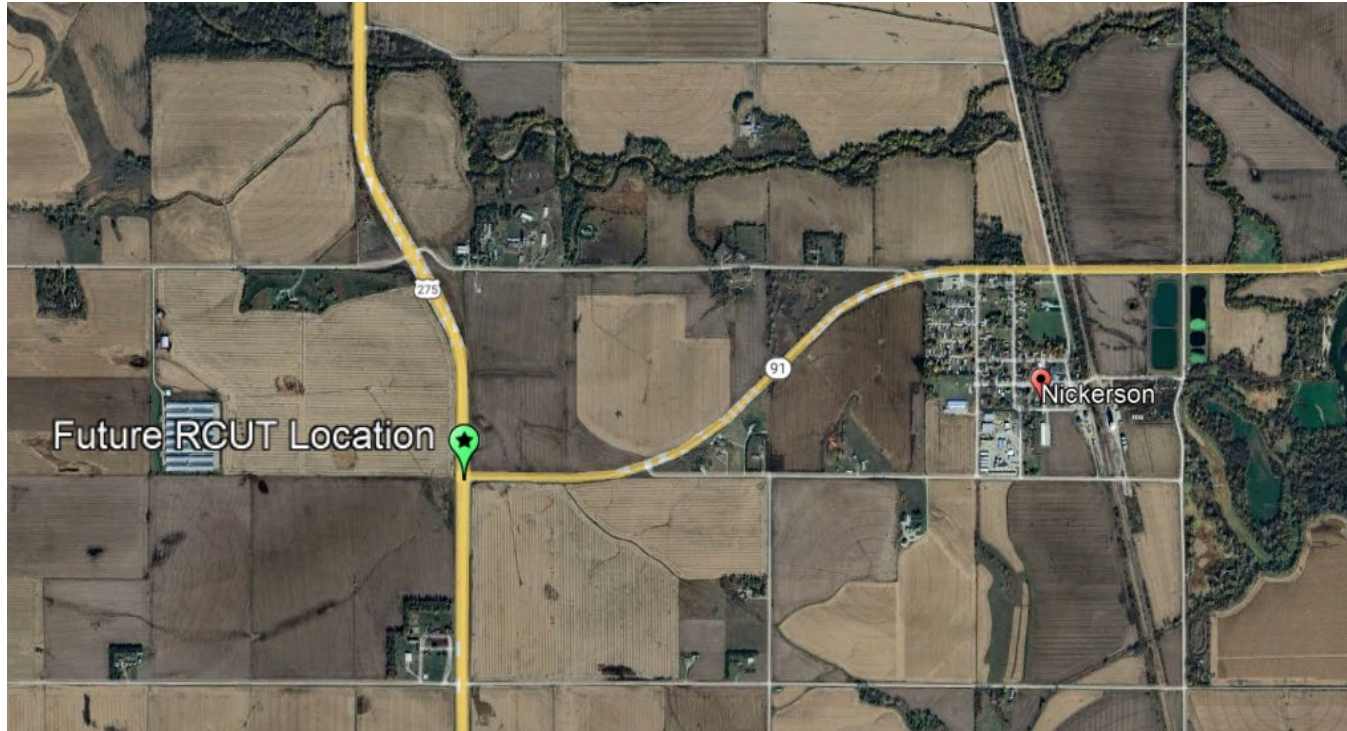


## Murray



# RCUT Installations - Future

US-275 & N-91 Jct. near Nickerson



# Other Safety Improvements





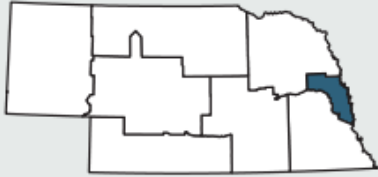






# District Two

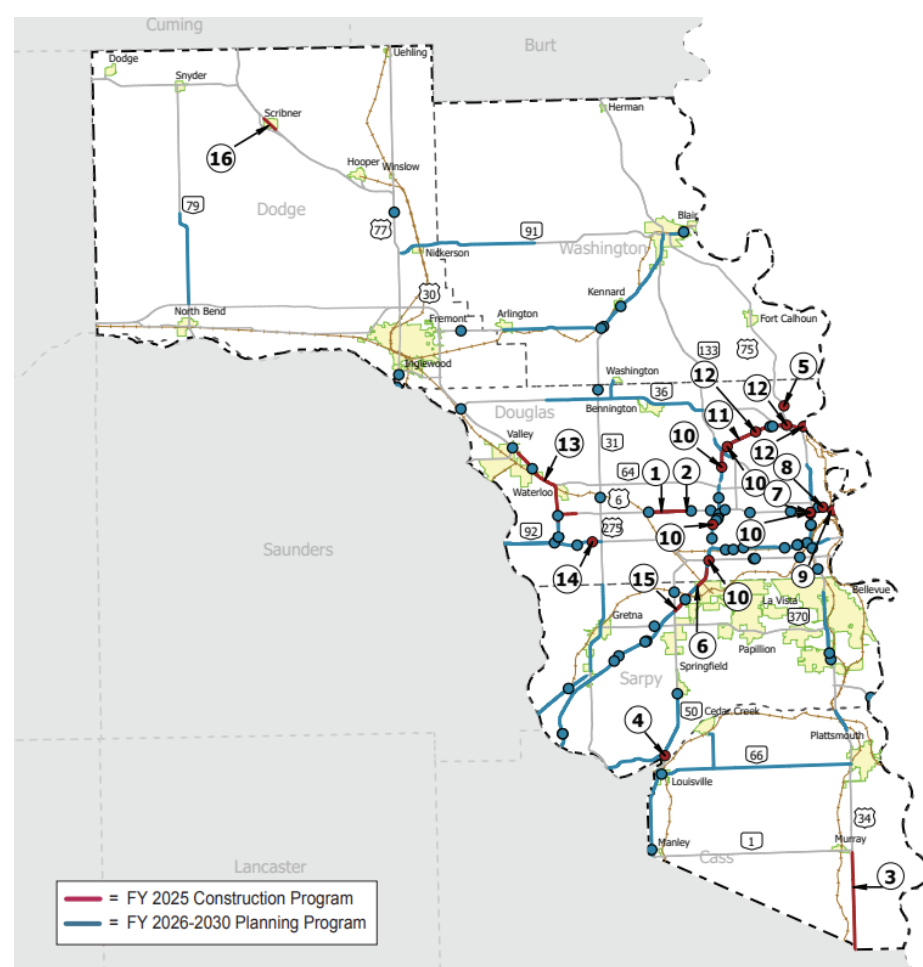
## Six-Year Highway Program



**District Engineer**  
**Thomas Goodbarn**  
4425 S. 108th St.  
PO Box 45461  
Omaha, NE 68145-0461  
402-595-2534



**Highway Commissioner**  
**Heath Mello**  
3432 S. 94th St.  
Omaha, NE 68124  
402-346-5291

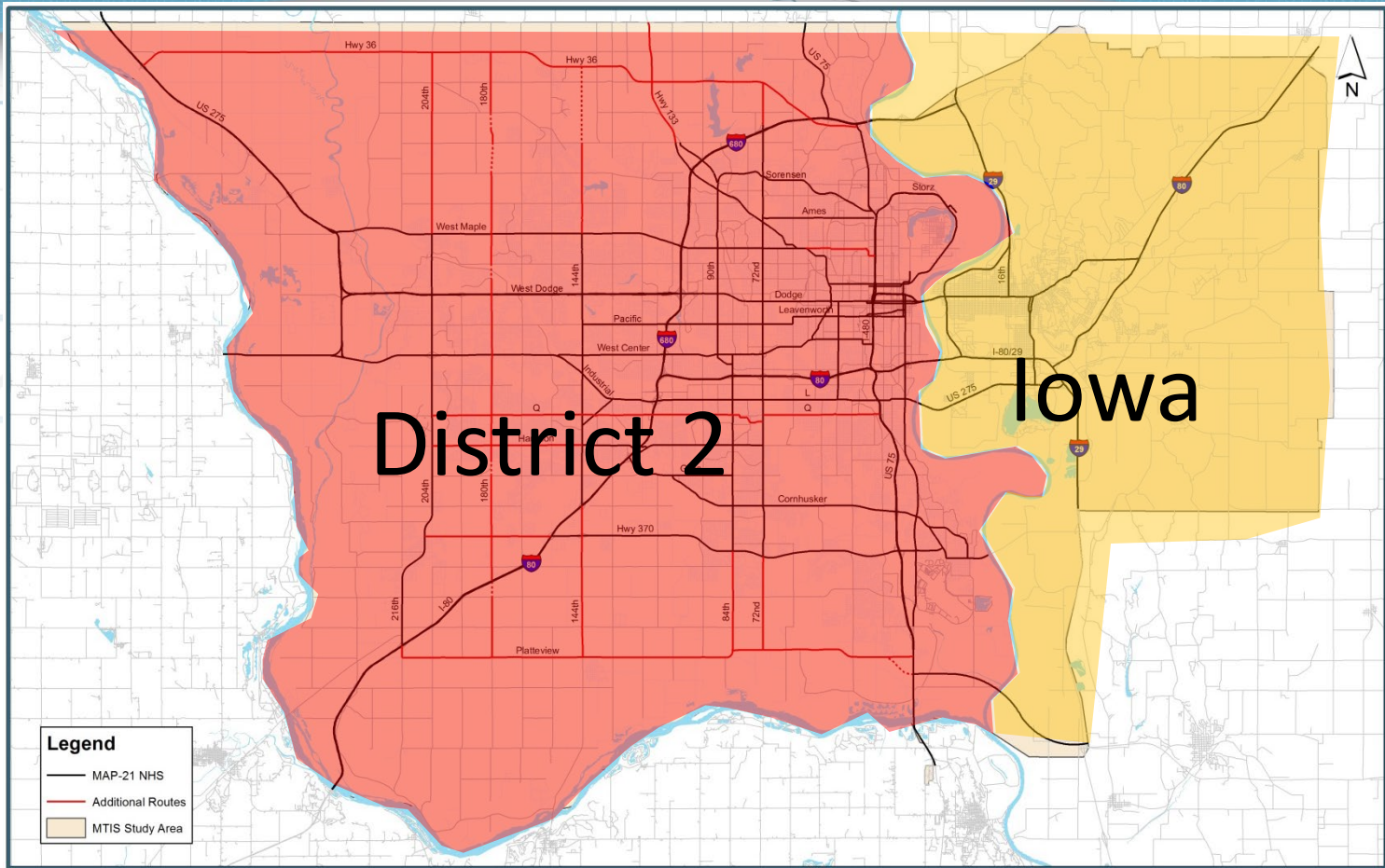


# Metro Area Travel Improvement Study



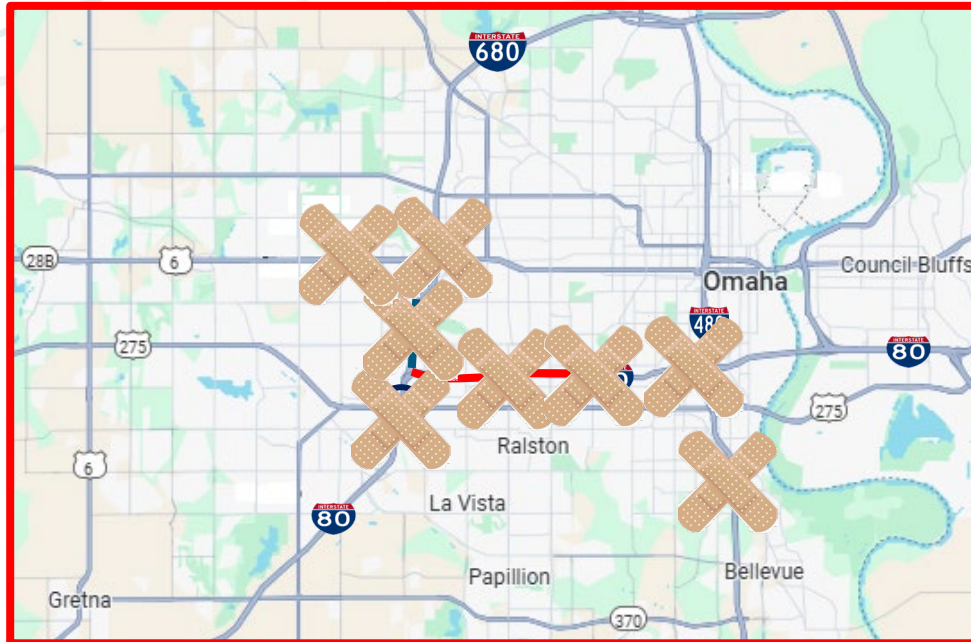
**MTIS  
2013-2018**

# MTIS Study Area



# Study Overview

- » Regional transportation study through 2040
- » Recognizes that the interstate & freeway systems needs are linked with arterials, local roads & transit systems.



# Organizational Overview

## » Executive Committee

- NDOT, Iowa DOT, MAPA, City of Omaha & FHWA

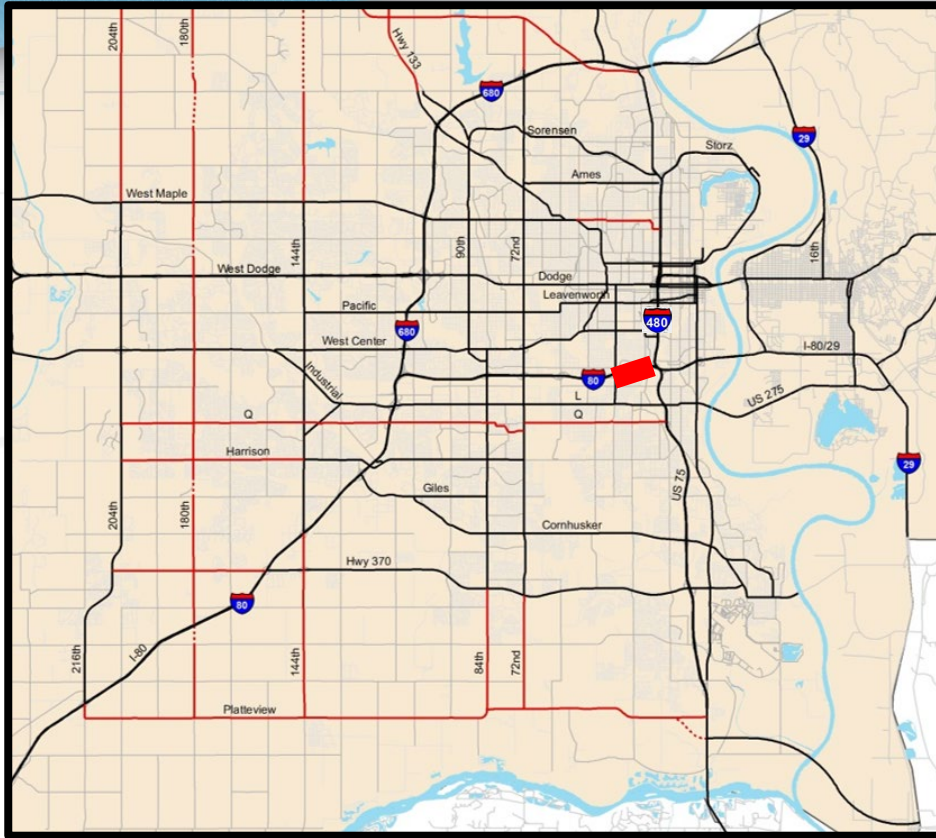
## » Technical/Stakeholder Committee

- Bellevue, La Vista, Papillion, Council Bluffs, Douglas County, Sarpy County, Metro Transit

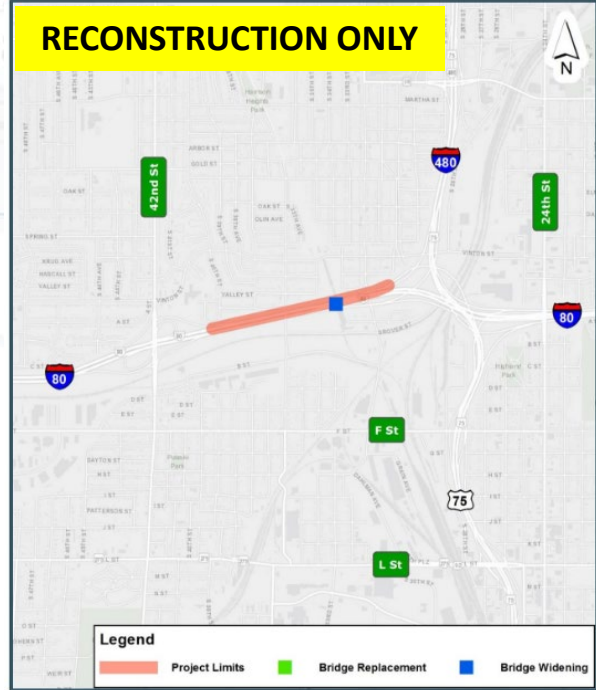




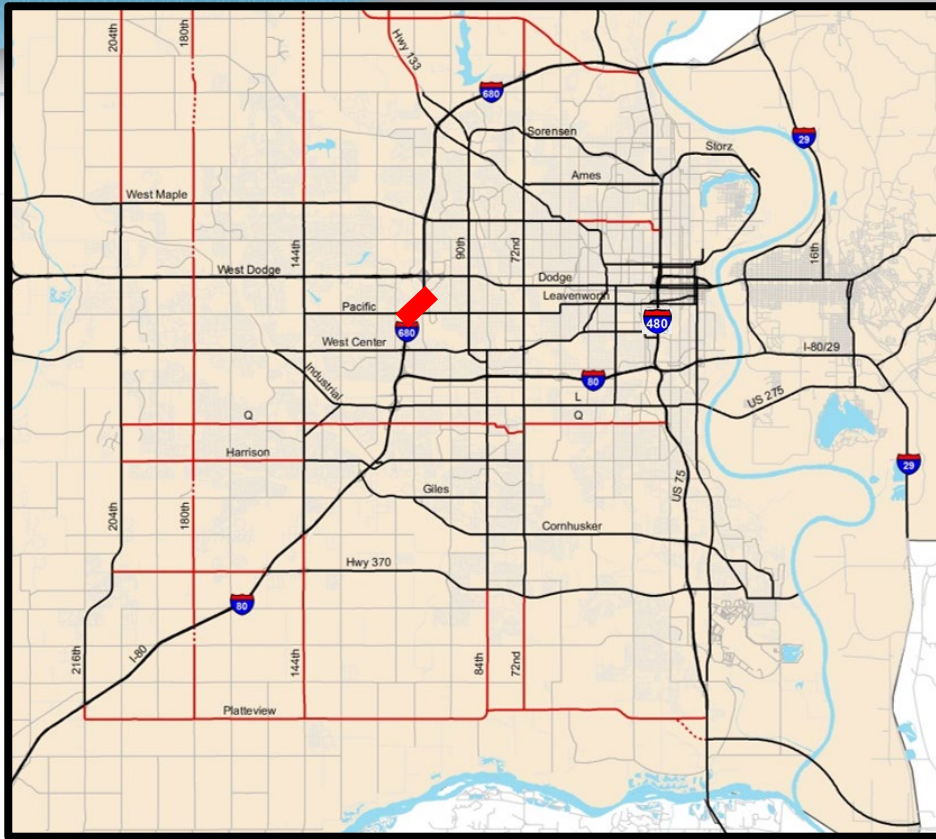
# UPCOMING MTIS PROJECTS



**E13** I-80 WB Mainline Expansion:  
US-75 to 42<sup>nd</sup> Street  
MP 452.79 – MP 452.09

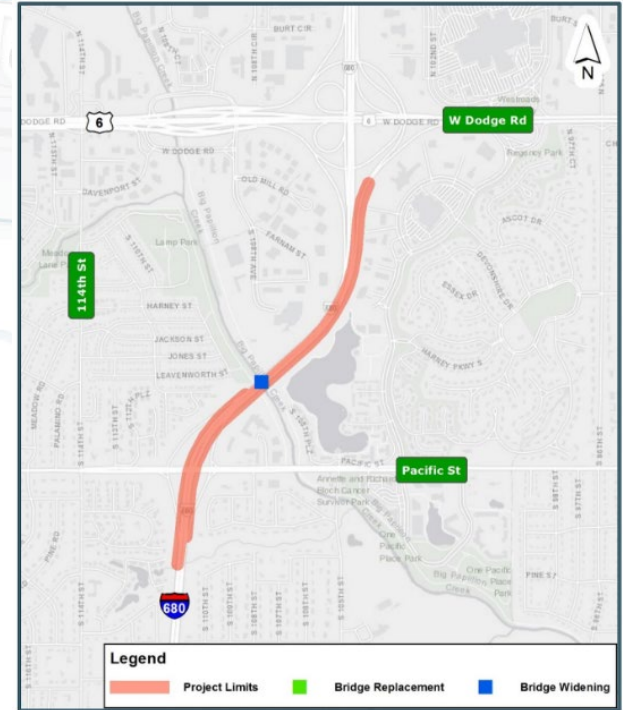


# UPCOMING MTIS PROJECTS

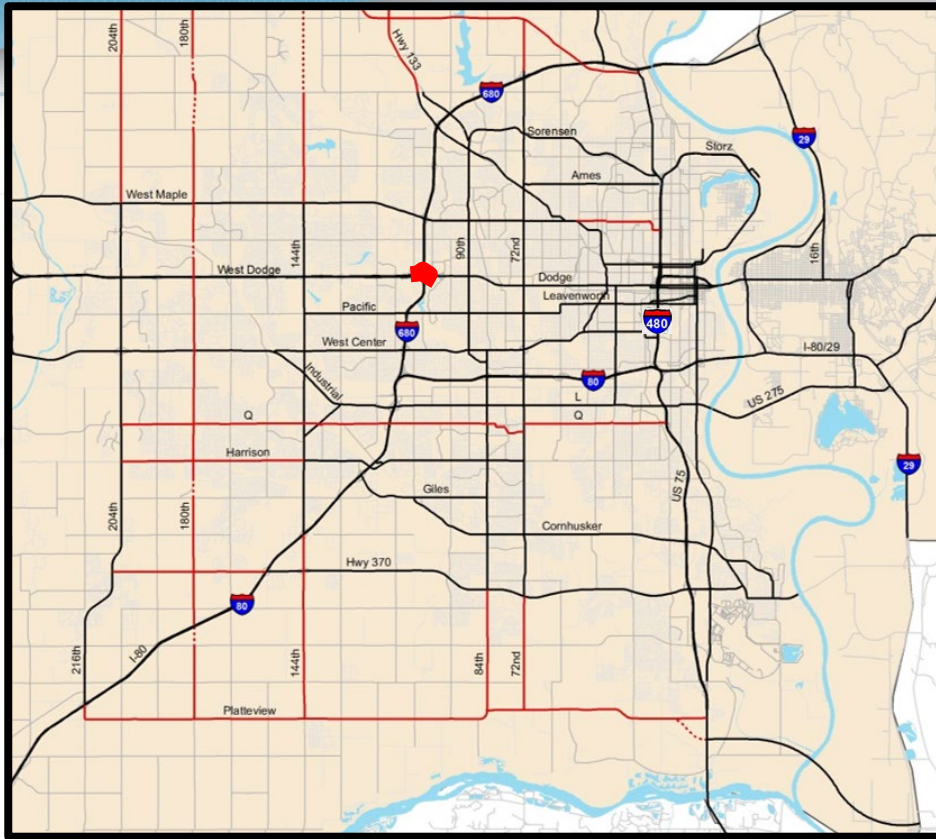


E16

I-680 Mainline Expansion:  
Pacific Street to West Dodge Road  
MP 001.55 – MP 002.71



# UPCOMING MTIS PROJECTS



E33

I-680 / US-6 System Interchange Expansion:  
WB Weave Improvements  
Near US-6 MP 365.04

