

# NDOT Good Housekeeping & Pollution Prevention

## BEST MANAGEMENT PRACTICES IMPLEMENTATION

### Building & Grounds

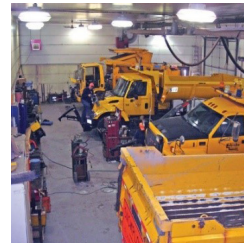


- » Keep culverts, gutters, and catch basins free of potential pollutants by:
  - Sweeping paved areas
  - Picking up litter
  - Cleaning up spilled material



- » Identify potential hazards to prevent impacts to nearby vegetation and drainage channels

### Vehicle & Equipment



- » Minimize pollutant runoff from vehicles and equipment by:
  - Conducting maintenance and repairs away from all inlets and catch basins
  - Cleaning up fuel and oil by using absorbents, sweeping up the material, then disposing properly
  - Parking vehicles and equipment close to designated pumps



### Product Materials



- » Raw material stockpiles should be:
  - Positioned away from all inlets and catch basins
  - Located in their designated areas to avoid accidents



- » Ensure that all containers are properly labeled and stored in their appropriate areas

### Bulk Storage Containers



- » When inspecting bulk storage containers:
  - Check tanks, pumps, pipes, and valves for signs of leaks and corrosion
  - All valves and plugs are closed
  - Assure that automatic shutoff valves are functioning properly



### Waste Materials



- » Handle waste materials on site by:
  - Covering and labeling all waste contained based on their type
  - Make a plan – how will you reuse or dispose of waste materials delivered on site?
- » Be sure to store all batteries in an upright position in leak proof and covered containers



For More Information:

Environmental Compliance Unit

[ndot.operationsenvironmental@nebraska.gov](mailto:ndot.operationsenvironmental@nebraska.gov) or call (402)479-4656

NEBRASKA

Good Life. Great Journey.

DEPARTMENT OF TRANSPORTATION