

## Public Information Open House Meeting

Palmyra Junior-Senior High School, 425 F Street, Palmyra, NE 68418

The Nebraska Department of Transportation (NDOT) is seeking input on the **Palmyra East & West** project, which proposes intersection improvements to Nebraska Highway 2 (N-2) near Palmyra in Otoe County, Nebraska.

### PROJECT LOCATION

The proposed project would improve N-2 intersections at N-43, I Street and S-66A / North 8th Road. This 1.5-mile proposed project would begin on N-2 at approximately 0.2 miles west of the junction of N-2 and N-43 and extend east to approximately 0.3 miles east of the junction of N-2 and S-66A.

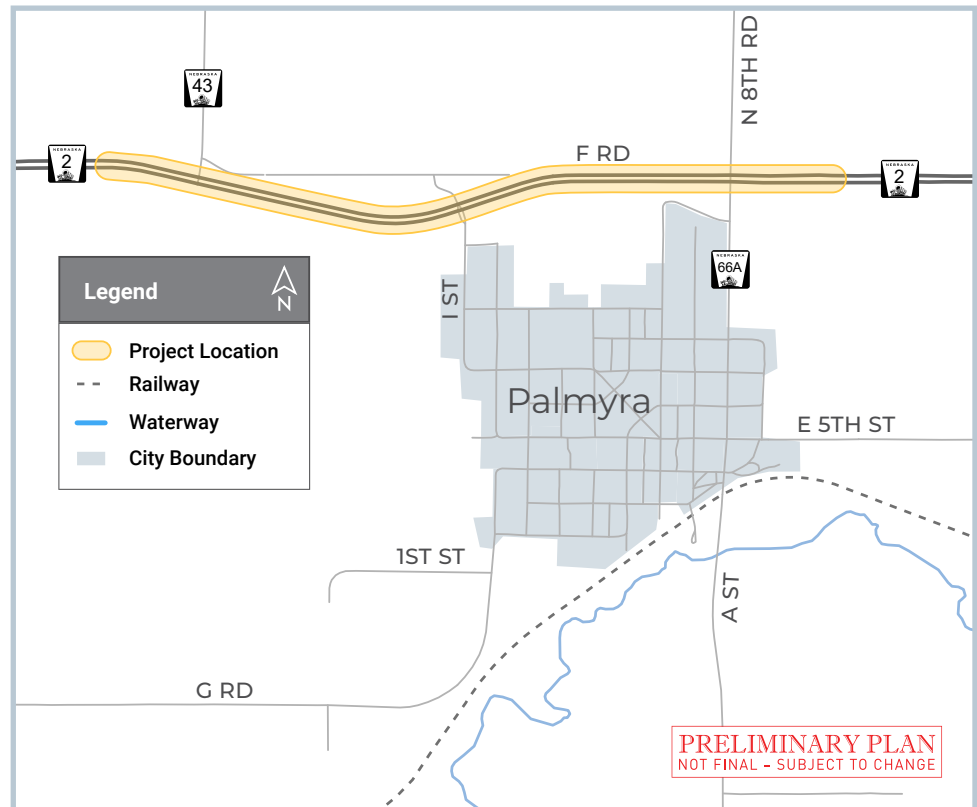
### PURPOSE & NEED

The purpose of the proposed project is to reduce the frequency and severity of crashes, improve the reliability of the transportation system, and perpetuate the mobility of the traveling public. The need for this project is based on crash trends.

### SCOPE OF WORK

The proposed project would improve the intersections by constructing a combined Restricted Crossing

U-Turn (RCUT) at the N-2 intersections with N-43 and I Street and constructing another RCUT at the N-2 and S-66A intersection. A westbound offset right-turn lane would be constructed at the N-2 and N-43 intersection and an eastbound offset right-turn lane would be constructed at the N-2 & S-66A intersection. Additional improvements would include new lighting.



## WHAT IS AN RCUT?

RCUT intersections have been shown to decrease crashes at intersections along four-lane divided highways. An RCUT intersection changes the typical way that drivers cross and turn onto the highway from side roads.

To watch an RCUT in action or learn more, please visit [www.ndot.info/RCUT](http://www.ndot.info/RCUT) or scan the QR code.



[www.ndot.info/RCUT](http://www.ndot.info/RCUT)

## HOW AND WHY DOES AN RCUT WORK?

### How does an RCUT work?

- Prohibits drivers from both directly crossing the four-lane highway and making left turns onto it.
- Directs drivers to turn right onto the highway and make a U-turn at the designated median opening.
- Avoids crossing multiple lanes of traffic.

### Why does an RCUT work?

- Simplifies crossings as drivers only need to look in one direction of traffic at a time.
- Reduces delays during peak times as drivers don't need to find a gap in both directions.

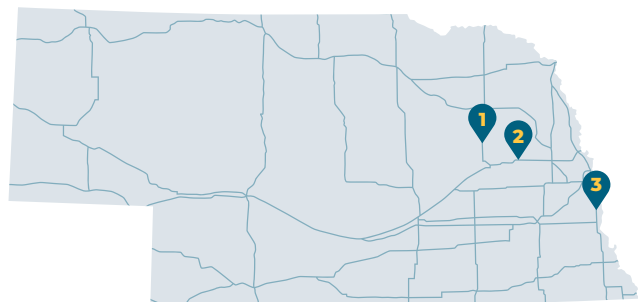
## WHAT ARE CONFLICT POINTS?

Conflict points are the places where vehicles can collide. RCUT intersections **reduce conflict points by over 40%** compared to traditional intersections. These conflict points are areas where traffic paths cross, merge or diverge, increasing the likelihood of crashes. By lowering the number of conflict points, RCUT intersections not only reduce crash potential, but they also tend to result in less severe crashes compared to traditional intersections on divided highways.

## NEBRASKA RCUTs

NDOT has constructed three RCUTs on highways within the state, with several others being considered.

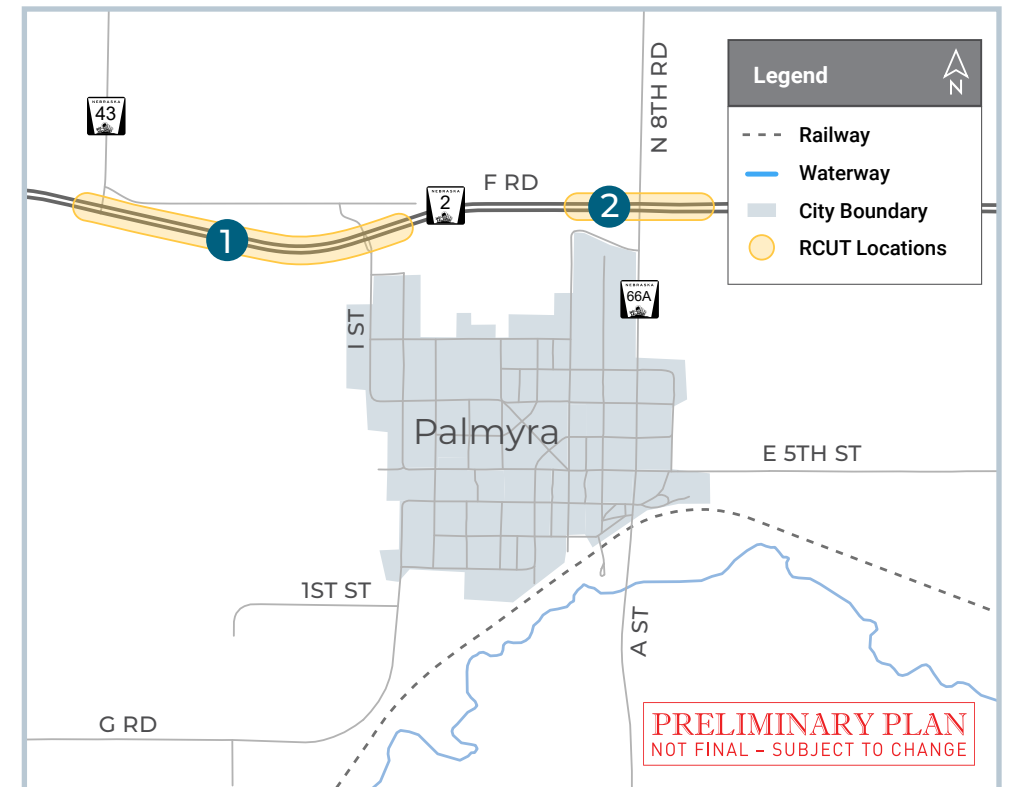
1. U.S. Highway 81 (US-81) and Nebraska Highway 91 (N-91) near Humphrey
2. U.S. Highway 30 (US-30) and Nebraska Highway 79 (N-79) near North Bend
3. U.S. Highway 34 (US-34)/U.S. Highway 75 (US-75) and Nebraska Highway 1 (N-1) near Murray



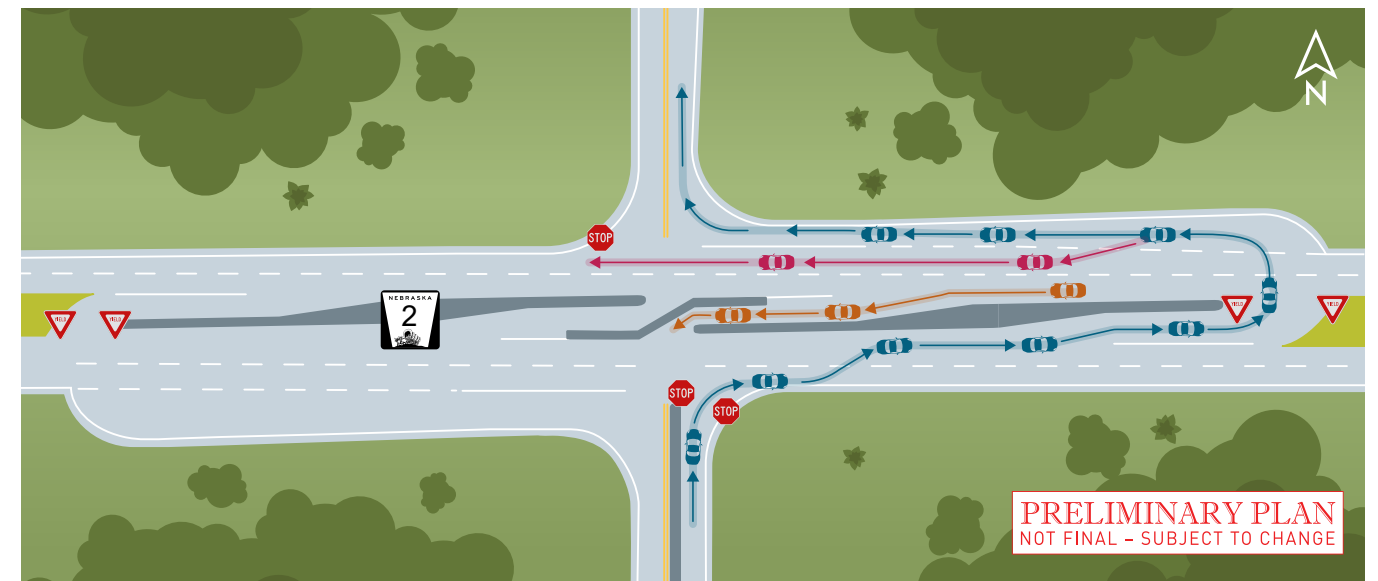
## RCUT LOCATIONS

NDOT is proposing intersection improvements along N-2 including:

- 1 A combined RCUT at N-43 & I Street
- 2 An RCUT at S-66A / North 8th Road



Drivers approaching N-2 from intersecting roads would not be allowed to make left turns or continue straight across the four-lane highway. Instead, they would be required to turn right and make a U-turn at a designated median opening. Traffic on N-2 would remain unaffected.



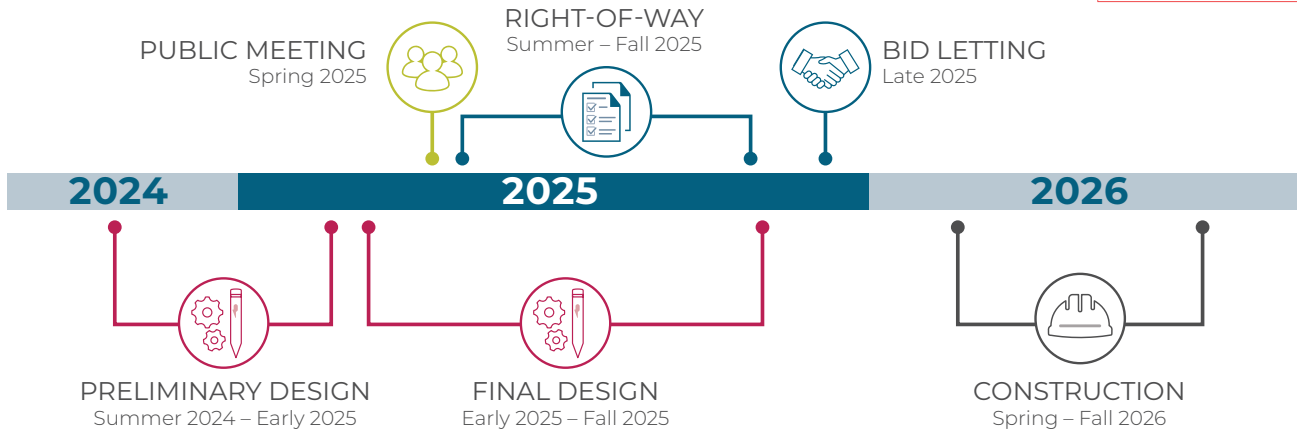
Not to scale. Actual RCUT design may vary.

# SCHEDULE & COST



**Estimated cost:** \$5.7 million from federal and state sources

**PRELIMINARY PLAN**  
NOT FINAL - SUBJECT TO CHANGE



## RIGHT-OF-WAY

This project would require the acquisition of additional property rights, which could include new right-of-way (ROW), control of access (CA), permanent easements (PE) and/or temporary easements (TE). If your property is impacted by this project, you will be contacted by a representative once the design footprint has been established.

## TRAFFIC ACCOMMODATIONS

This project would be constructed under traffic with lane closures controlled by appropriate traffic control devices and practices. Access to adjacent properties would be maintained during construction but may be limited at times due to phasing requirements.

SCAN ME!



[www.ndot.info/13573](http://www.ndot.info/13573)

## FEEDBACK

Information regarding the proposed project is available at [www.ndot.info/13573](http://www.ndot.info/13573).

Comments will be collected through **April 18, 2025**, and can be submitted on the on the project page or to:

**Sierra Luhn**

NDOT Public Involvement  
[sierra.luhn@nebraska.gov](mailto:sierra.luhn@nebraska.gov)  
402-479-3103

For those without internet access, information may be obtained at:

**NDOT Headquarters**

1500 Nebraska Pkwy  
Lincoln, NE 68502

Or by contacting:

**Brandon Varilek**

NDOT District 1 Engineer  
[brandon.varilek@nebraska.gov](mailto:brandon.varilek@nebraska.gov)  
402-471-0850